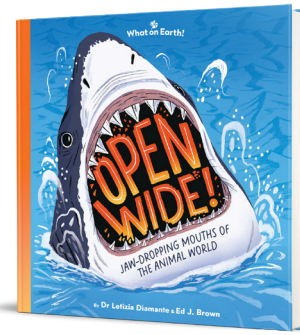


What on Earth!

# OPEN WIDE!

www.whatonearthbooks.com

Can you match these awesome jaws, teeth, tongues, and spit facts to the right animal?



1. Has fangs that fold flat to stop it accidentally biting itself.
2. Can lose more than 20,000 teeth in its lifetime.
3. Has billions of bacteria in its mouth.
4. Can extend its tongue one-and-a-half times its body length, longer than any other mammal!
5. Has the strongest bite in the world.
6. Uses its spit to cool itself down.
7. The eggs of this species hatch inside their dad's mouth.
8. Has a black tongue.

Answer









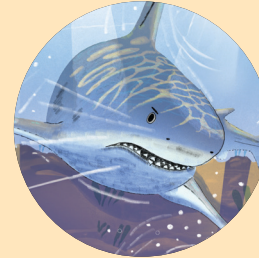

Nile Crocodile

A



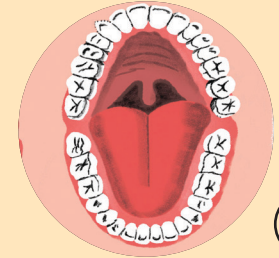
Snake

B



Great White Shark

C



Human

D



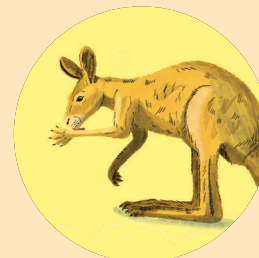
Yellowhead Jawfish

E



Giraffe

F



Kangaroo

G



Nectar Bat

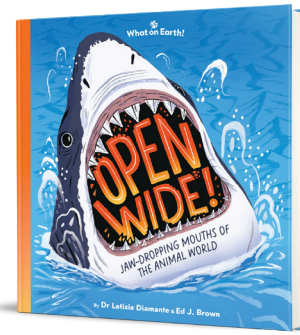
H

What on Earth!

# OPEN WIDE!

www.whatonearthbooks.com

Can you match these awesome jaws, teeth, tongues, and spit facts to the right animal?



- Has fangs that fold flat to stop it accidentally biting itself.
- Can lose more than 20,000 teeth in its lifetime.
- Has billions of bacteria in its mouth.
- Can extend its tongue one-and-a-half times its body length, longer than any other mammal!
- Has the strongest bite in the world.
- Uses its spit to cool itself down.
- The eggs of this species hatch inside their dad's mouth.
- Has a black tongue.

Answer

(B)

(C)

(D)

(H)

(A)

(G)

(E)

(F)



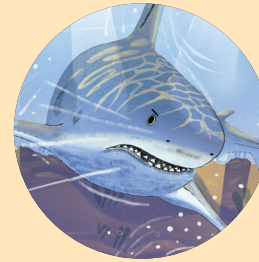
Nile Crocodile

(A)



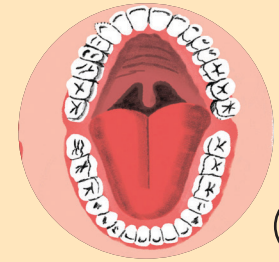
Snake

(B)



Great White Shark

(C)



Human

(D)



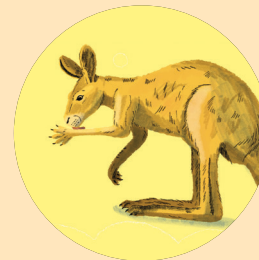
Yellowhead Jawfish

(E)



Giraffe

(F)



Kangaroo

(G)



Nectar Bat

(H)